

# SMART 60S

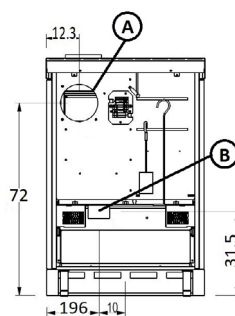
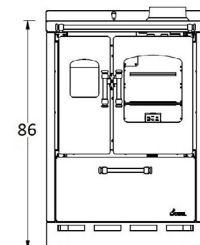
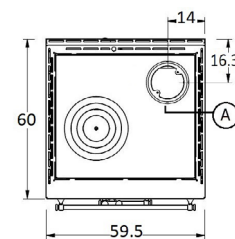
Certificate model name : SMART 60S



Stufa a legna da inserimento / libera installazione

# CADEL




Potenza nominale	kW	6,5
Potenza ridotta	kW	-
Potenza al focolare (max)	kW	7,7
Potenza utile all'acqua nominale	kW	-
Potenza utile all'acqua ridotta	kW	-
Efficienza energetica stagionale	ηs [%]	75
Rendimento nominale	%	85,1
Rendimento ridotto	%	-
Volume riscaldabile (min-max)	m <sup>3</sup>	185
CO al 13% O <sub>2</sub> nominale	%	0,085
CO al 13% O <sub>2</sub> ridotto	%	-
Emissioni CO (13% O <sub>2</sub> ) (min-max)	mg/Nm <sup>3</sup>	1062
Emissioni OGC (13% O <sub>2</sub> ) (min-max)	mg/Nm <sup>3</sup>	64
Emissioni NOX (13% O <sub>2</sub> ) (min-max)	mg/Nm <sup>3</sup>	90
Contenuto di polveri al 13% O <sub>2</sub> (min-max)	mg/Nm <sup>3</sup>	21
Capacità caldaia (H <sub>2</sub> O)	l	-
Capacità serbatoio	kg	-
Combustibile		<b>Legna</b>
Consumo orario (min-max)	kg/h	1,8
Autonomia (min-max)	h	-
Assorbimento elettrico in accensione (max)	W	-
Assorbimento elettrico in lavoro (max)	W	-
Tensione di alimentazione e frequenza	V - Hz	-
Depressione canna fumaria	Pa	12
Massa fumi (min-max)	g/sec	6,3
Temperatura fumi in uscita (max)	°C	185
Peso netto	kg	123
Peso lordo	kg	136
Scarico fumi (A)	Ø mm	140
Entrata aria comburente (B)	Ø mm	80
Uscita canalizzazione (C)	Ø mm	-
Canalizzabile sino a	m	-



Art. 15A-B-VG 2015  
BimSchV 2015  
Regensburg  
München  
Stuttgart  
Aachen



## COMBINAZIONI

71220026		Metallo antracite	EAN 8053859016472
71220027		Metallo bianco	EAN 8053859016489
71220028		Metallo rosso	EAN 8053859016496

### OPTIONAL

5020005	Piedini estetici	EAN 8053859012597
5020006	Zoccolo inox	EAN 8053859012603
5020008	Alzatina inox H4	EAN 8053859012627
5020009	Alzatina inox H6	EAN 8053859012634
5020014	Coperchio	EAN 8053859012689
5021005	Raccordo 140/150 mm	EAN 8053859014256

## PLUS



Cucinare



Built - in



Freestanding



Scarico fumi superiore e posteriore



Vista sul forno



OPTIONAL Kit ventilazione + luce

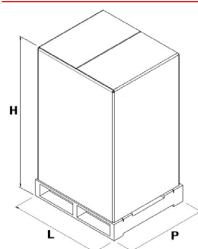


Interno in refrattario con aria 2<sup>a</sup> combustione



Porta in ghisa

## IMBALLO STUFA

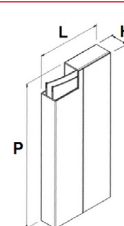


L (cm)	H (cm)	P (cm)
79	103.1	80

VOLUME (m<sup>3</sup>)

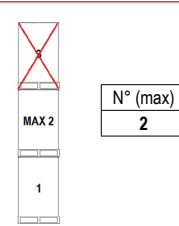
0.65

## IMBALLO FINITURE



	L (cm)	H (cm)	P (cm)
metallo	60	13,5	80

## STOCCAGGIO



## TRASPORTO

